

# IN CASE OF CRIME

Try to remain calm and aware of everything around you. Observe the suspect as closely as possible. Try not to focus on any weapon. Call police only when it is safe to do so, identify your situation, location, name, phone number and wait for them to arrive. Utilize this sheet to record the incident as best you can.

SEX	SPEECH PATTERN	SCARS	WEAPONS	BAIT MONEY SERIAL NO.
-----	----------------	-------	---------	-----------------------

HAIR
------

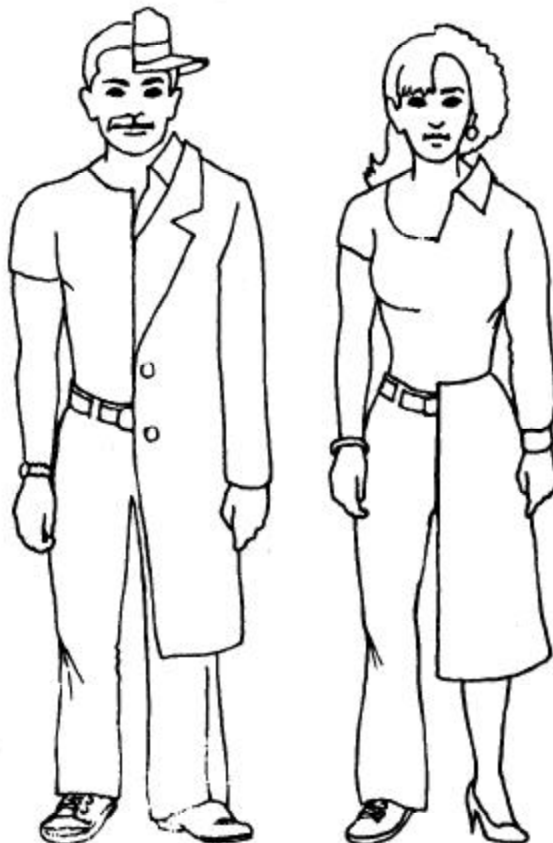
EYES
------

RACE
------

AGE
-----

HEIGHT
--------

WEIGHT
--------



CLOTHING WORN
---------------

HAT
-----

FACIAL HAIR
-------------

COAT
------

PANTS
-------

SHOES
-------

AUTO DESCRIPTION	WHAT ROBBER SAID	AUTO LICENSE NUMBER
------------------	------------------	---------------------

ADDITIONAL REMARKS
--------------------

This form is designed to assist you in remembering the appearance of a suspect. Complete it as soon as possible after the incident. Start at the suspect's head and use the diagram to guide you. Use the reverse of worksheet if additional space is needed. Complete it alone. Do not discuss what you remember with others. The idea is to record what you remember, not to form an agreement with other witnesses.

suspectws.pdf



Philadelphia Police Department  
One Franklin Square  
Philadelphia, PA 19106